

Hosea's Heart Fundraising Plan



NEW ROOTS: From Ashes to Oaks

A campus-style compound which will house up to 56 girls and will include staff/volunteer housing, a school building, a workshop, and other income-generating projects

Phase 1 Goal:

\$120,000

Contact Information

info@hoseasheart.org www.hoseasheart.org

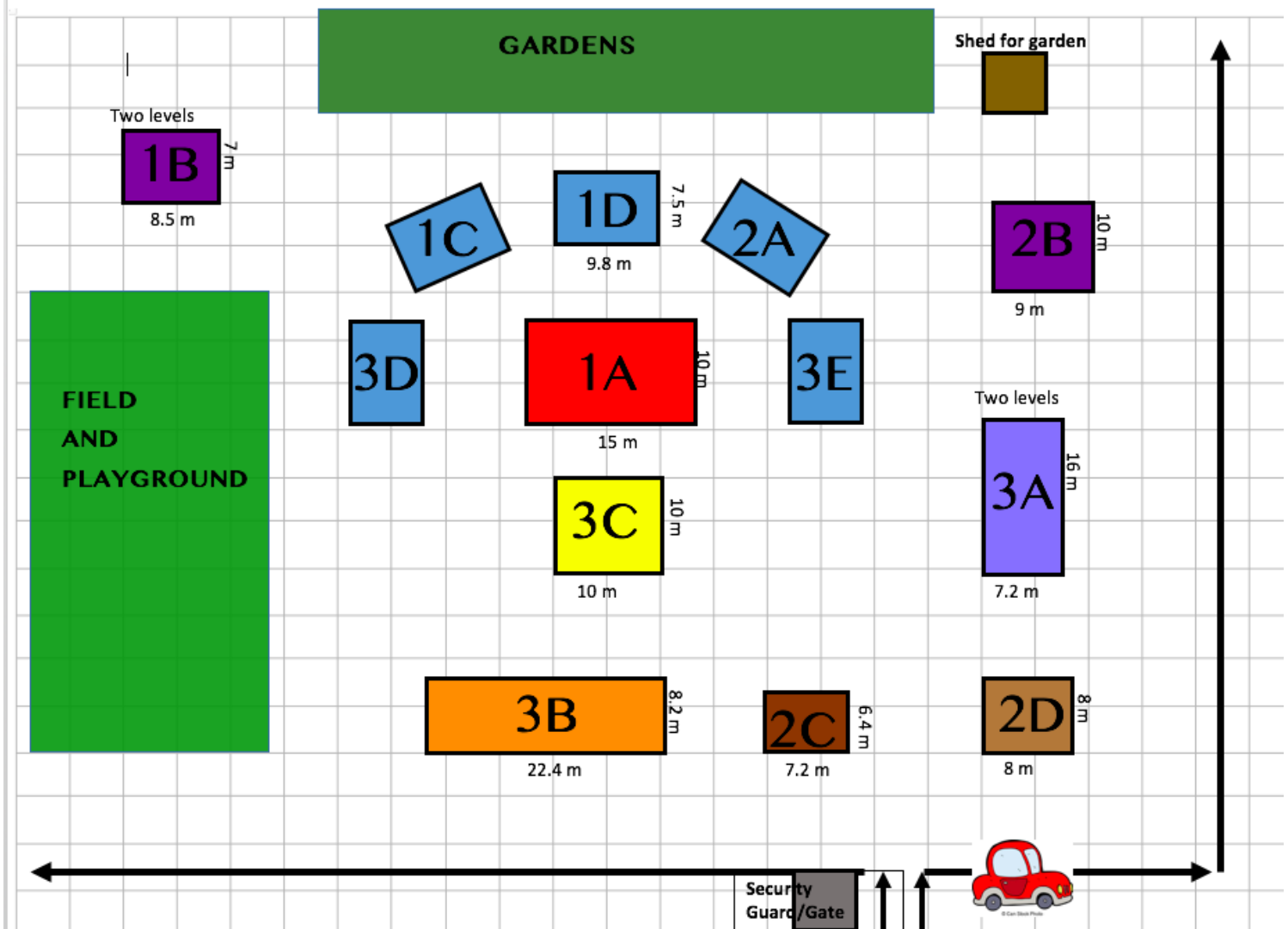
P.O. Box 695, Marshall, WI 53559



Building Phases

- Phase 1:** Multipurpose Building, Full Time Staff, 2 Family Units
- Phase 2:** Family Unit, Long Term Volunteers Housing, Offices, Workshop
- Phase 3:** Short Term Volunteers, Teenage Mother's Housing, School, Chapel, 2 Family Units

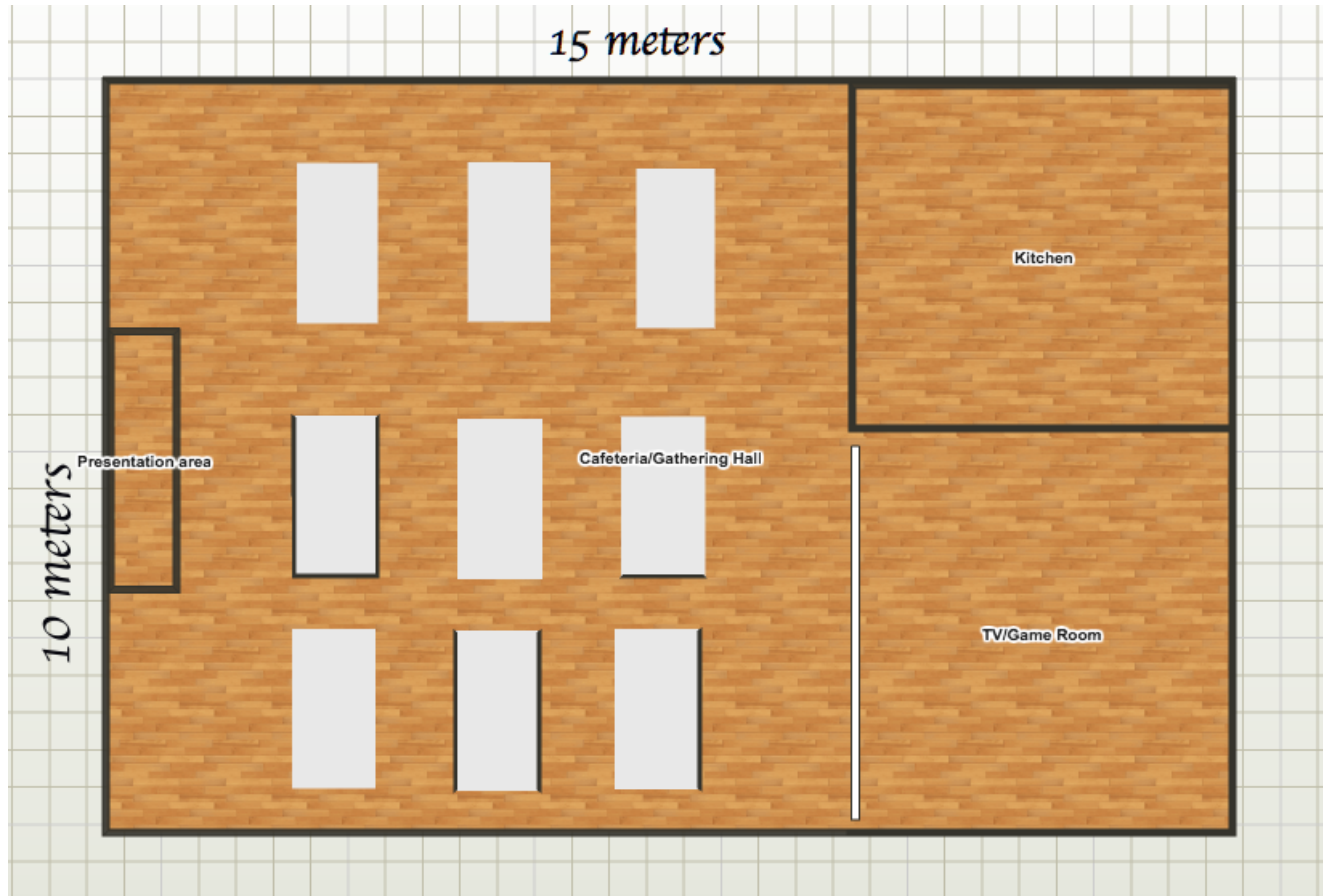
New Roots: From Ashes to Oaks Campus Plan - 1 hectare (100 x 100 meters)



PHASE 1:

1A: Multipurpose Building

Whole Sponsorship - \$44,000



OR

Sponsor a Room:

½ Kitchen - \$3,500 (x2)

Event Space - \$26,500

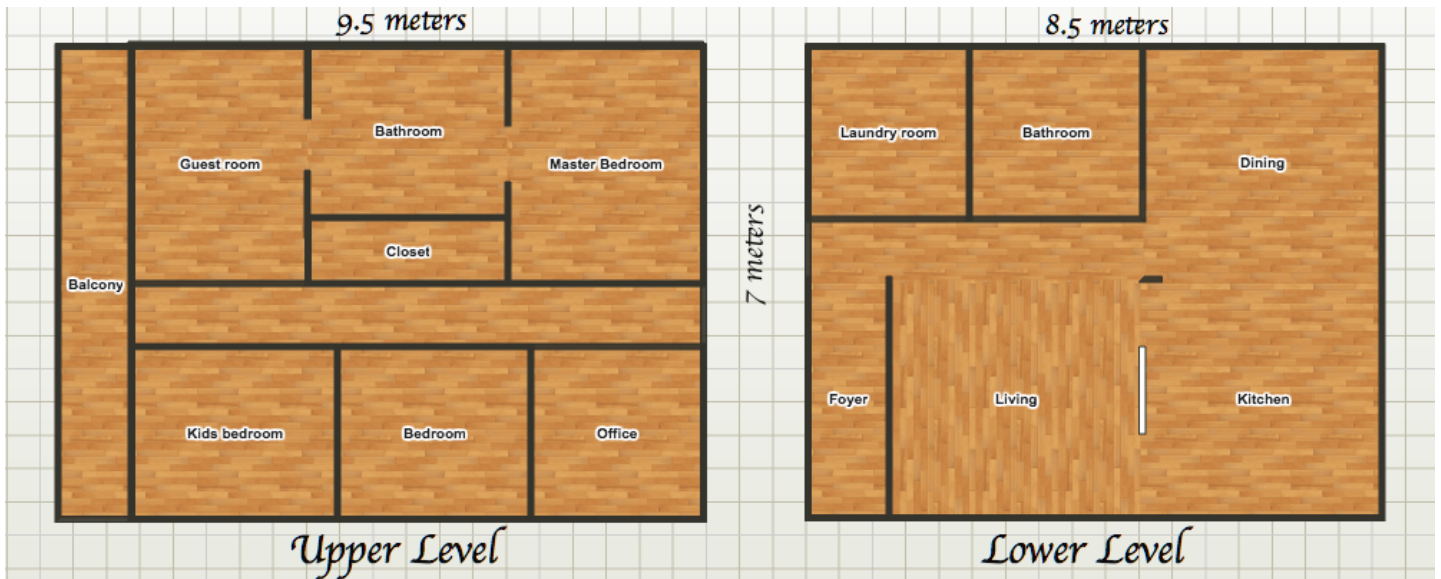
OR sponsor a wall - \$6,625 (x4)

TV/Game Room - \$10,500

OR sponsor a wall - \$2,625 (x4)

1B: Director/Full Time Staff House

Whole Sponsorship - \$33,000



OR

Sponsor a Level:

1st Level - \$15,500

2nd Level - \$17,500

OR

Sponsor a Space:

Kitchen - \$3,000

Dining - \$3,000

Living & Foyer - \$4,500

Office - \$2,000

Bathroom - \$2,250 (x2)

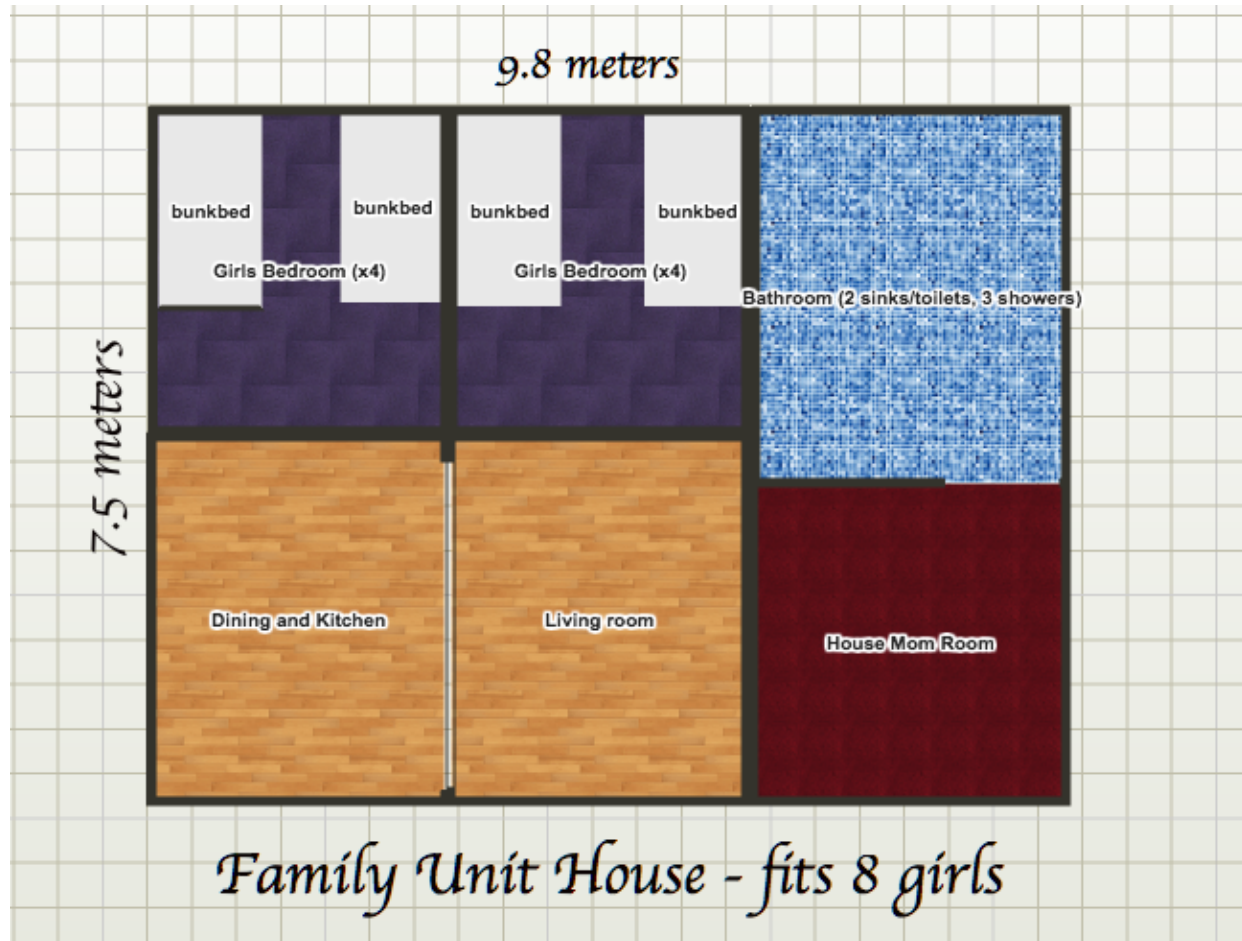
Bedrooms - \$2,500 (x4)

Balcony - \$2,000

Laundry, Closet & Hallway - \$4,000

1C: Family Unit #1

Whole Sponsorship - \$21,500



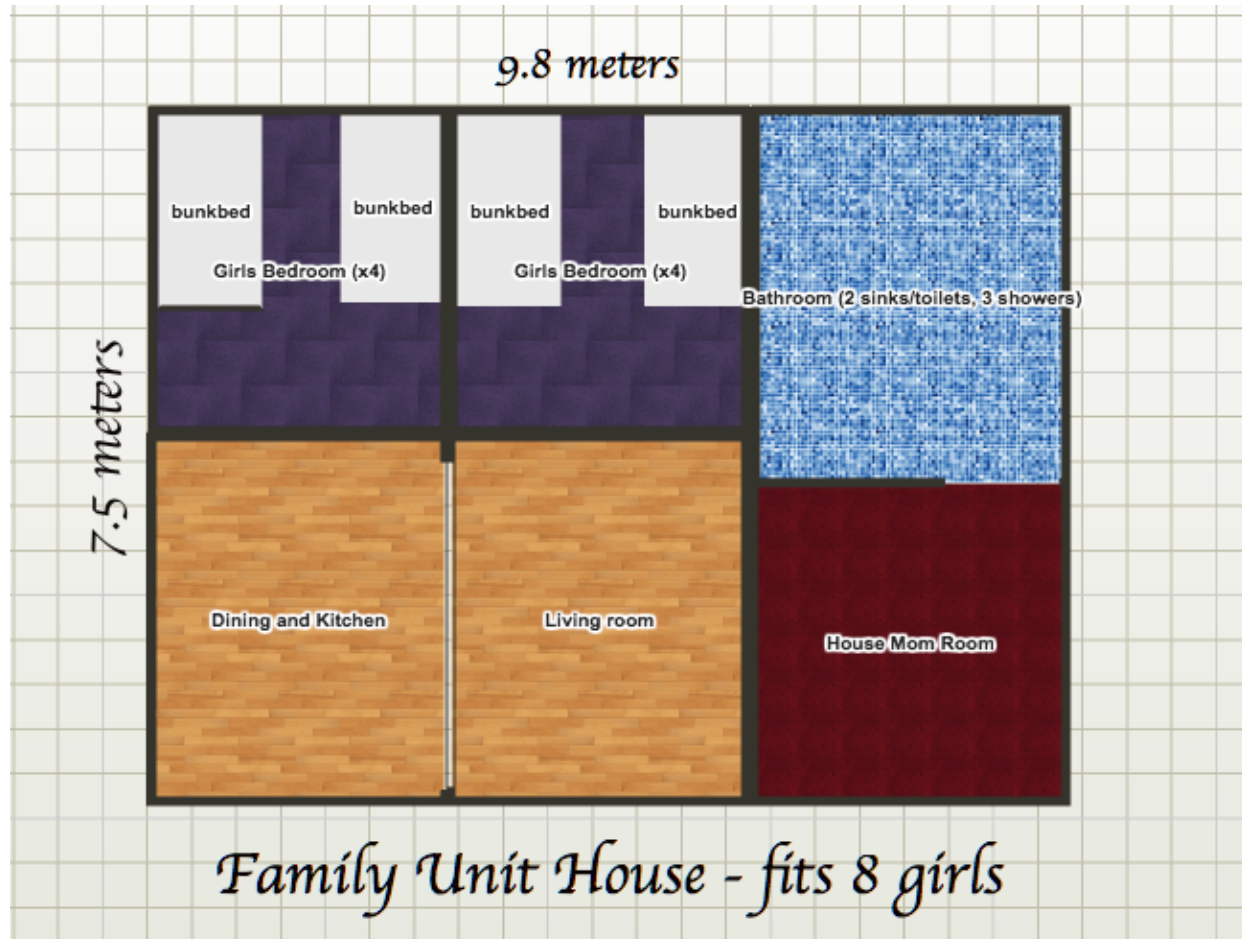
OR

Sponsor a Space:

- 1 Bunk Bedroom - \$1,600 (x4)
- ½ Bathroom - \$1,800 (x2)
- House Mom's Room & Bathroom - \$4,000
- Dining - \$3,000
- Kitchen - \$1,500
- Living - \$3,000

1D: Family Unit #2

Whole Sponsorship PER House - \$21,500



OR

Sponsor a Space:

- 1 Bunk Bedroom - \$1,600 (x4)
- ½ Bathroom - \$1,800 (x2)
- House Mom's Room & Bathroom - \$4,000
- Dining - \$3,000
- Kitchen - \$1,500
- Living - \$3,000